



DJ MOORE LOFTS

The Only Way Is Up



D.J. MOORE PLUMBING

VELUX



TRUSTMARK
Government Endorsed Quality



Leaders In Bespoke Loft Conversions

At DJ Moore Lofts, we believe your dream loft should reflect your vision – and we're here to bring it to life.

From the very first conversation to the final finishing touch, we work closely with you to build not just your perfect space but a strong and trusting partnership along the way.

We're committed to honesty, integrity, and open communication throughout every stage of your build. Our team takes genuine pride in their craftsmanship, approaching every project with care, precision, and attention to detail, helping you make the most of your loft.



Our Ethics

We're passionate about giving back. From sponsorships to local events, we love getting involved and making a difference in our community.

We Proudly Support:



Our Promise To You

- ✓ Fixed price quotes – no hidden extras
- ✓ Free site survey and quote
- ✓ Very competitive prices
- ✓ Stage-by-stage payment scheme
- ✓ Prompt turnaround times
- ✓ 5-year guarantee as standard
- ✓ Accredited member of 'Which Trusted Trader'
- ✓ We take care of all correspondence with your local authorities
- ✓ Daily contact on site to ensure all questions are answered directly
- ✓ We work alongside you from start to finish – from original plans to completed works
- ✓ Minimum disruption to your home and day-to-day life
- ✓ Reference and viewings of previous work available on request

Meet Our Team



Darren and Greg

Loft Conversion Team



Nathan and Jamie

Loft Conversion Team



Steve and Mario

Loft Conversion Team



Patrick and Tyler

Plumbing Team



Creig

Plasterer



Ben

Contracts Manager



Laura

Office Manager



Frequently Asked Questions

Q. Why should I consider a loft conversion?

- A.** With the costs of moving, and the increase in house prices, having a loft conversion is a less expensive and easier way of upsizing your home. It can also add value to your property.

Q. Can any type of loft be converted?

- A.** In most cases, yes. However, there are a few requirements; for example, we require a minimum of 2.3m head height in your loft for a conversion to be viable.

Q. Do you have your own architect, or do I need to source one?

- A.** We have our own architect and design team that we work closely with to help keep things cost-effective for you. However, you can certainly use your own architect if you wish.

Q. Can I see some of your work?

- A.** Our website and Facebook pages provide an extensive portfolio of our current and previous projects, including videos and photos.

Q. How long will the process take?

- A.** Most loft conversions are completed in a 4-5 week window from start to finish.

Q. Do I need to move out?

- A.** Not at all. We strive to keep mess and disruption to a complete minimum, allowing you to continue your day to day lives.

Q. Do I need planning permission?

- A.** This depends on the area where you live, and the style of conversion you're going for. We and our dedicated architects will help assist with gaining any permissions if they're needed.

Q. Do you do house extensions too?

A. We only specialise in loft conversions, to keep our quality of work to the highest standard.

Q. How much does a loft conversion cost?

A. The cost of a loft conversion depends entirely on size, spec, and the type of conversion you choose. A Velux conversion starts at around £22,000+, a dormer conversion from around £28,000+, and a hip to gable starts at approx. £30,000+. These prices are a very rough guide only.

Q. Can we look in the loft during the build?

A. We actively encourage this. It allows you to see the space and the progress.

Q. Will bad weather or the winter months affect the build?

A. Not at all. We build our lofts all year round.

Q. Do all the doors in my house need to be changed to fire doors?

A. Typically, we have two options to comply with building regulations. You can either change all doors for habitable rooms to fire doors, or the most popular option is to install a smoke detector system.

Q. Is your work guaranteed?

A. Yes, all our work is covered with a standard 5 year guarantee. There is an option to extend this.

Q. Are you insured?

A. All of the team are fully insured for all of the work that we complete.

Q. I have a water tank in my loft, will this be a problem?

A. If you have a water tank that is taking up a lot of room in your loft, then our team will be able to move it to a more convenient spot as part of the conversion process. We have an in-house plumber on hand who is qualified to reposition water tanks with little disruption.

Q. I've got solar panels, how will this affect my loft conversion?

- A.** Depending on the type of conversion you're having, you can either have them moved or relocated. We have experience with both these options and have used a specialist company for this.

Q. Do you offer a payment plan?

- A.** We don't offer a payment plan. However, all our lofts work with a stage payment scheme, so your total costs are split into 3 payments. Each payment is due once a stage has been completed.

Q. Do you offer trade account discounts?

- A.** We have multiple trading accounts with many local and national companies, allowing you to benefit from discounts on bathrooms, tiles, and much more.

Q. Will someone be on site daily?

- A.** Yes, the team leader for your loft conversion will be on site every day. They aim to catch up with you each day to run through the progress of your build and to answer any questions.

Q. How long is my quote valid for?

- A.** All quotes are valid for 3 months as dated on the quote.

Q. Are building control fees included in the quote?

- A.** Yes, we include this as standard in all of our quotes that include our plans and designs. If we are using plans and designs from an architect that you are supplying, these fees may need to be covered by you.

Q. Are your prices fixed?

- A.** All of our quotes are a fixed price. There are no hidden extras.

If you do have any other questions regarding your project, then please do not hesitate to ask.

12 Things to Consider About a Loft Conversion

1. Value it may add to your house/cost-effective way to add space:

Loft conversions are a popular way to create a new unique space in a house. We would recommend speaking to a local estate agent to get a better idea of the value a loft conversion could add, and whether it would be financially beneficial in the long run or not.

2. Window placement for natural light:

Plenty of natural light will improve the appearance of any space. We recommend having a window at the front and back of a room, as this helps to keep the area cool and prevents overheating. A window above the stairwell leading to a loft is a fantastic way to transform any existing landing using natural light. A popular choice at the moment is a Juliet balcony in the dormer.

3. Head height:

As a rule, we need 2.3m head height for a loft conversion to be possible. There are options to raise the height in certain cases, but for a standard loft, 2.3m is required to carry out the conversion in the most cost-effective way.

4. Plumbing requirements, boilers and tanks in the loft:

Having water tanks in your loft is not a problem, but it may mean that a pressurised water system is needed if you're looking to install a bathroom in the space. Two options to do this include switching to a combi boiler, or replacing your existing hot water tank with a megaflo system. We can advise you on which option best suits your needs and identify any limitations of the current system.

5. Planning and PD right restrictions:

Most lofts can be converted no problem under PD rights and are relatively straight forward. We do, however, work closely with a planning and design team who are able to give our clients expert advice, as well as handle all design and paperwork if required.

6. Access and space for works:

Something always worth considering is whether you have the space for things like skips, work materials and potentially scaffolding. We are well equipped to gain access over structures such as conservatories, but having enough space to work in and store materials correctly is really beneficial to helping a job run as smoothly as possible. We can always talk through options with you if you're unsure about any of these points.

7. Does the company specialise in loft conversions?:

Although you don't always need to be a specialist to convert a loft, there are some real benefits to using a company, like us, that works with lofts day in day out. As well as being able to work faster and provide better turn around times, we also have the expert knowledge required when it comes to the structural conversion of a loft. This includes being able to utilise all available space to its full potential and obtain the best head height. Our expertise also means that we can offer services such as bespoke staircase design to maximise the space and flow of hallways.

8. Reviews and testimonials from real clients?:

It's really important to research any kind of company that you'll be trusting to complete a project as big as this. It's essential to feel confident that a company can deliver on what they are promising before you book them to do a job. Always look for reviews on 3rd party sites such as Google, Facebook and Trustpilot. These all provide 100% authentic feedback that companies have not been able to edit.

9. Realistic start dates?:

As a company owner, it's really important for me to give my clients realistic start dates. I wouldn't want to take on a job based on false promises and not be able to deliver. Because of this, I will always provide a realistic start date and guarantee a month that we will be able to begin where possible.

10. Disruption to home:

We will always try our best to work around our client's schedules to cause as little disruption as possible. The first few weeks of a loft conversion involves working on the exterior of your property, using scaffolding for access. When it comes to carrying out internal works, such as fitting staircases, we are very mindful of our clients and will always try and do this once the house is empty. On days when we require access to your house, we'll make sure to give plenty of notice so you're never caught off guard.

11. Are they insured and accredited to complete the works?:

Always make sure to ask the company to provide the necessary insurance documents for all policies, as well as certificates for accreditation's or qualifications.

12. We are accredited by the Which? Trust-a-trader scheme:

As well as being Which? approved, we are also part of TrustMark. Both companies have strict codes that all tradespeople must adhere to in order to pass and keep their accreditations. We are also the only local company currently registered as certified installers of Velux products.



Loft Conversion Types

Dormer Loft Conversions

A dormer adds a box-shaped extension to your sloped roof, creating vertical walls and a flat ceiling. It's ideal for boosting headroom and floor space, offering more room than any other loft conversion type.

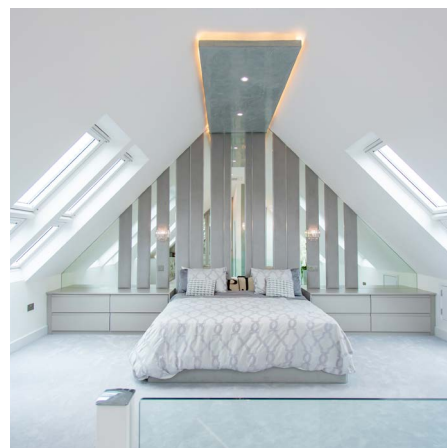


VELUX® Loft Conversions

A VELUX® conversion is perfect for lofts with good head height. With no significant structural changes, roof windows are added to fill the space with natural light while keeping the original sloped ceilings.



VELUX
Certified Installer Partnership
Building the success of your business



Hip-To-Gable Loft Conversions

Ideal for semi-detached or detached homes with a hipped roof that slopes down towards the eaves, a hip-to-gable conversion extends the sloping side of the roof to form a vertical gable wall.



Need Planning Permission? We Handle It For You

Most loft conversions don't need planning permission, but if yours does, we'll handle the entire process for you, from submission to compliance, so you don't have to worry about a thing.



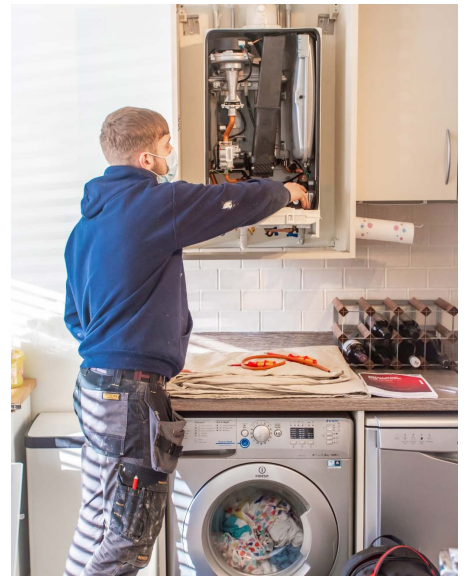
Plumbing & Heating

At DJ Moore Lofts, we go beyond just creating beautiful loft spaces - we ensure they're fully functional too. Whether your project requires relocating or upgrading your boiler, or you're looking to include a stylish new bathroom or ensuite, our team takes care of it as part of your conversion.



We have an in-house team of heating and plumbing specialists who can:

- ✓ Relocate your existing boiler to free up space
- ✓ Upgrade your boiler system if needed for added efficiency
- ✓ Provide a full boiler service to ensure everything's running smoothly
- ✓ Install a full bathroom or ensuite, including all plumbing and fixtures
- ✓ Advise on the best layout for water flow and ventilation
- ✓ Handle all work in compliance with building regulations

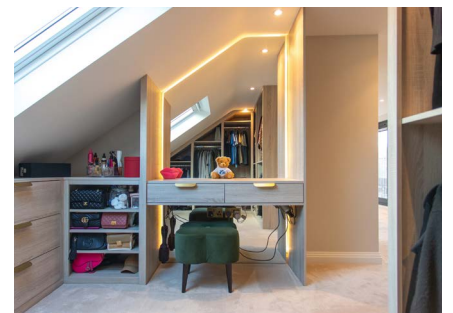
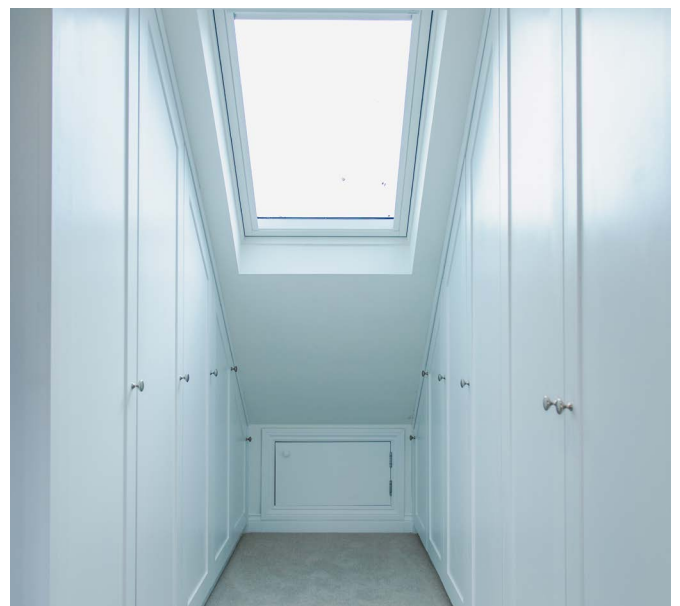
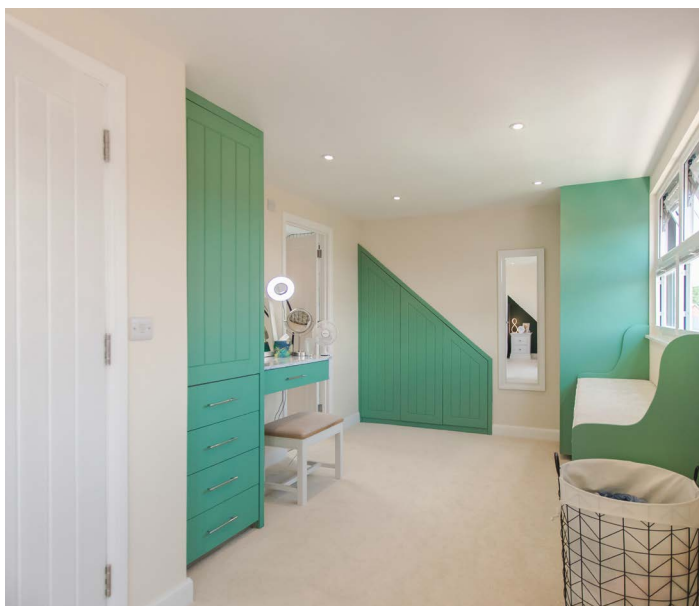


Bespoke Wardrobes

Make the most of every inch of your loft with bespoke wardrobes designed and built to fit your space perfectly. Whether it's a bedroom, dressing area, or walk-in wardrobe, we create clever, stylish storage solutions that work seamlessly with the unique angles and layout of your loft.

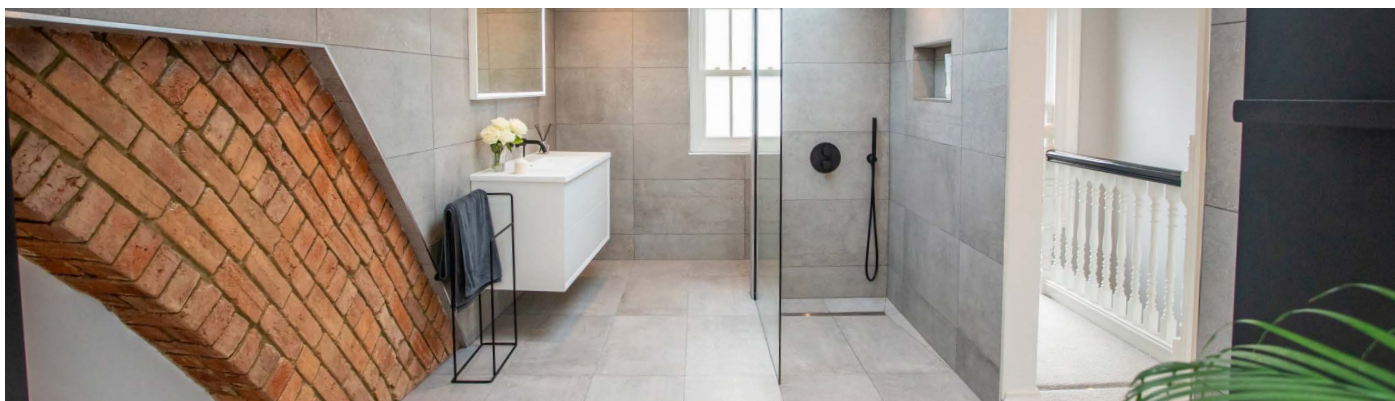
With our made-to-measure wardrobe service, we offer:

- ✓ Tailor-made wardrobes built to fit sloped ceilings and tight spaces
- ✓ Fitted storage for bedrooms, dressing areas, or walk-in wardrobes
- ✓ A wide range of finishes, colours, and handles to match your style
- ✓ Thoughtful internal layouts, including rails, drawers, shelves and more
- ✓ Built-in lighting options for added convenience and luxury

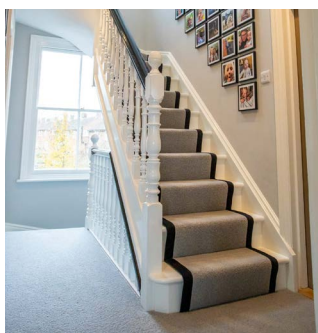


Finishing Touches

We handle every detail to ensure your loft conversion is move-in ready upon completion, so all that's left for you to do is make the space your own.



Flooring Installation



Carpet Installation



Laminated Installation



Vinyl Installation



Tile Installation

Interior Decoration



Plastering



Painting



Wallpapering

Our Project Portfolio

Browse just a handful of our incredible past projects.



Dormer Loft Conversion - Stony Stratford

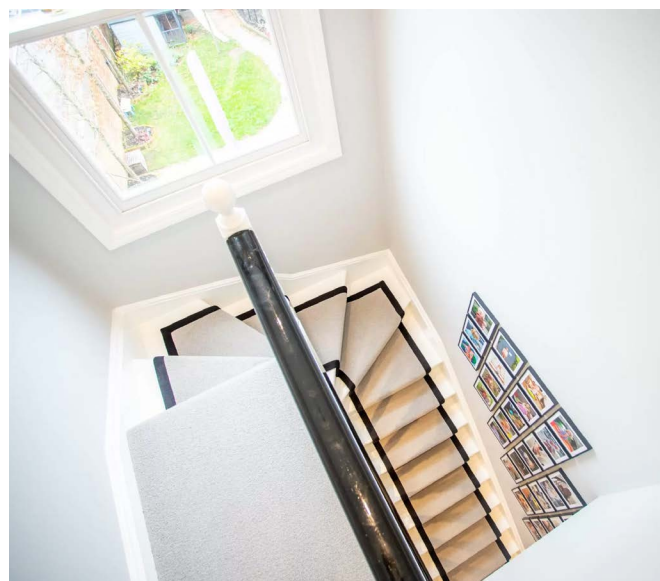


Scan to view case study

Project Overview:

- ✓ Spacious master bedroom and a large bathroom with freestanding bath, wetroom shower, double basin, and wall-hung toilet
- ✓ Incorporating a beautiful chimney feature as a focal point
- ✓ Two Mk06 VELUX® windows and a large sash window
- ✓ Bespoke items added mid-build (floating desk, shelves, and large fitted wardrobes)
- ✓ Victorian-style staircase designed to match the original style of the home



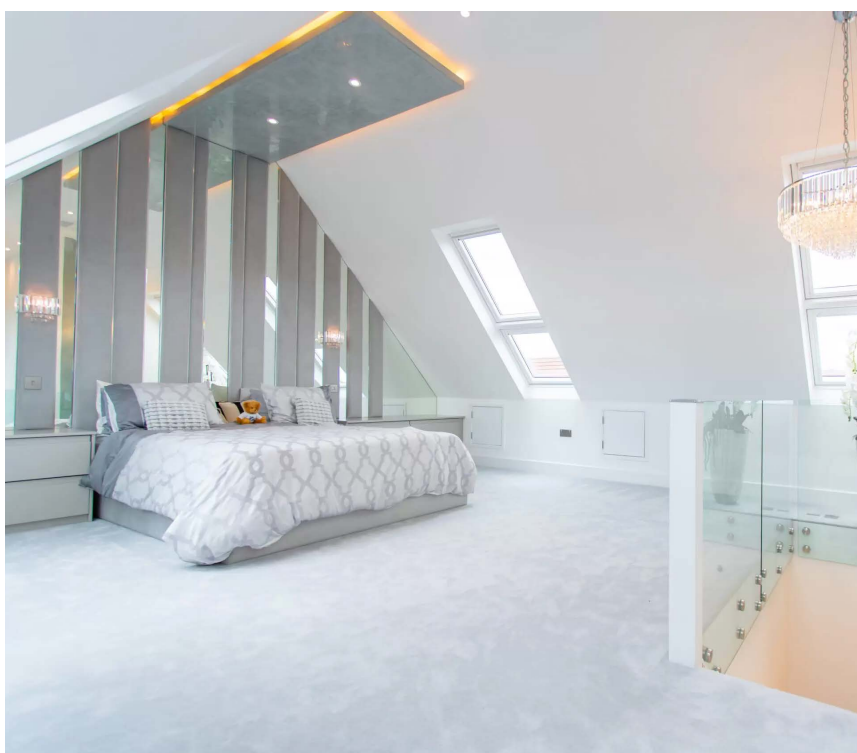


"We had a brilliant experience using DJ Moore. Dan was very responsive and delivered exactly what we asked for, nothing was too much trouble. He was particularly good at keeping us updated with timescales and progress. Charlie, Harry and Jack worked very hard and the quality of their work was fantastic, they arrived promptly every day and left the site clean and tidy. They were very knowledgeable and reliable. The rest of the team were amazing too and worked very hard to ensure we were delighted with the finished product. We wouldn't hesitate to recommend Dan and his team."



Project Overview:

- ✓ Open-plan master bedroom and wet room with his and hers sinks
- ✓ 14 VELUX® windows, including a group of four offering countryside views
- ✓ Open-plan design with fire door and glass stairs for a seamless flow
- ✓ Bespoke lighting features (LED above the bed and up the stairs)
- ✓ Air conditioning with flush-mounted ceiling cassette
- ✓ Bespoke 15mm toughened glass staircase
- ✓ Fully electric solar blinds on all windows for optimal light control
- ✓ High-end, luxurious finish throughout





Dormer Conversion – Wootton



Scan to view case study

Project Overview:

- ✓ Master bedroom with ensuite and dressing area
- ✓ Removal of an existing shower room to create space for new stairs
- ✓ Modern 2-in-1 VELUX® window installed on the stairs for natural light
- ✓ Rear dormer designed to blend with the exterior while maximising space
- ✓ Unique 3-in-1 VELUX® window with a sloped glass feature in the master bedroom
- ✓ Solar blackout blinds and air conditioning for year-round comfort
- ✓ Bright ensuite with double shower tray, LED lighting, and light-coloured tiles
- ✓ Fitted wardrobe and dressing area with custom-built furniture





Dormer Conversion, Biggleswade



Scan to view case study

Project Overview:

- ✓ Large master bedroom with a lounge area, dressing room and ensuite bathroom
- ✓ Existing water tank was repositioned to allow for a stairwell extension, and a new horizontal pressurised water system was installed beneath the eaves
- ✓ Master bedroom boasts a custom headboard feature wall behind the bed and a lounging area with a sofa and TV
- ✓ Ensuite features sliding door access, wall tiling, marble-effect flooring, a built-in soap box and a wall-hung sink with a cabinet for storage
- ✓ Bespoke walk-in wardrobe with sliding doors, LED lighting, and full-length mirror





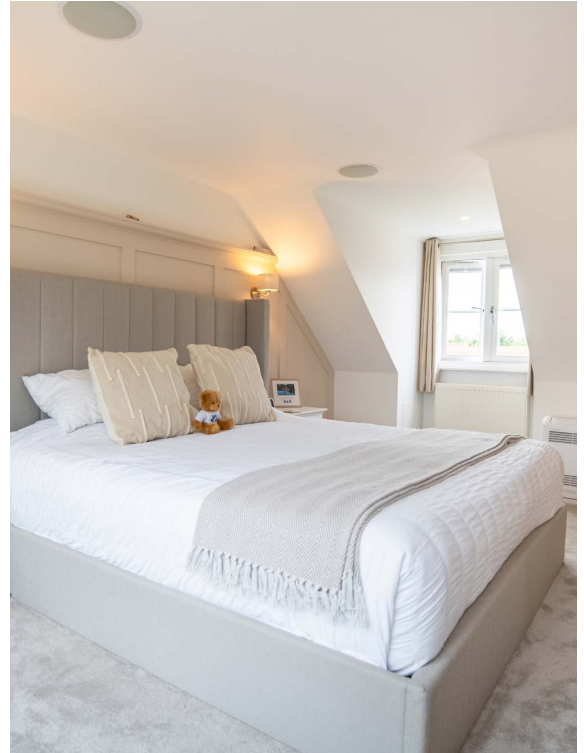
Dormer Conversion - Bedford



Scan to view case study

Project Overview:

- ✓ Master bedroom with ensuite, small bedroom, and dressing room
- ✓ Complex steel layout designed due to a lack of load-bearing walls in the attic
- ✓ Large rear dormer and two pitched roof dormer windows at the front
- ✓ Extension of existing stairwell with shadow-effect LEDs
- ✓ New ensuite added to downstairs bedroom
- ✓ Installation of smart tech (automatic curtains, lighting, and speakers) in the master bedroom
- ✓ UPVC windows plus a Juliet balcony with large side windows
- ✓ Sustainability features, including solar panel installation for off-grid living



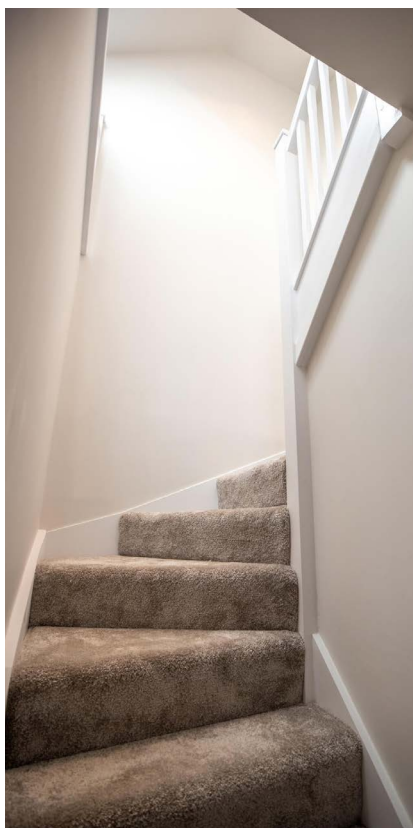


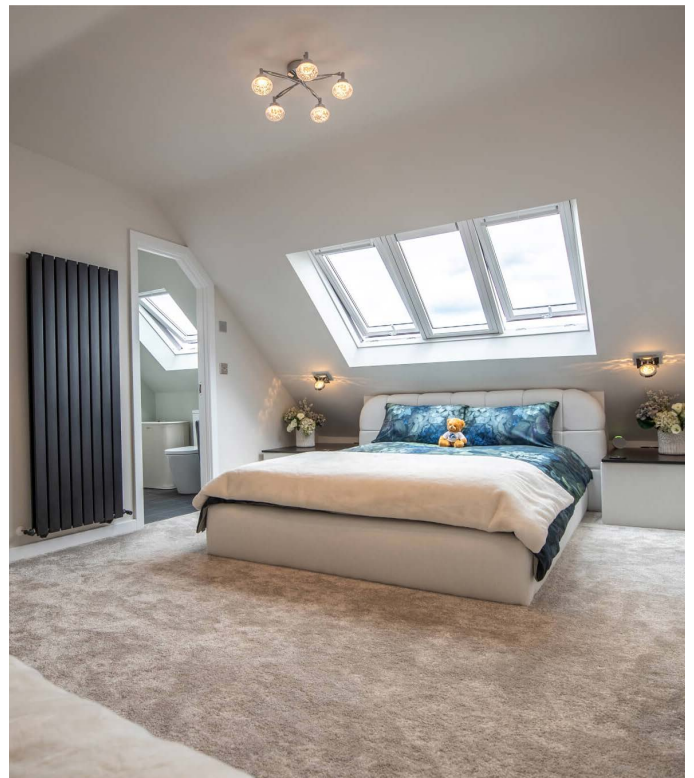
"We are over the moon with our loft conversion, comprising of 2 bedrooms, an ensuite and a dressing room. Dan and the team worked faultlessly making such a big project feel like a breeze. The end result is really something special!"



Project Overview:

- ✓ Master bedroom with en suite and his-and-hers walk-in wardrobes
- ✓ Intricate truss layout required custom solutions
- ✓ Open-plan design with fire door for safety compliance
- ✓ Three-in-one VELUX® window for natural light and focal point
- ✓ Bespoke walk-in wardrobes by George James Carpentry
- ✓ Luxury en suite with large shower, textured tiling, and VELUX® window
- ✓ LED mirror for added style and functionality





"Just cannot recommend Dan and his company enough. First we did not even ask for any other companies to quote. The reputation and the quality of work shown on the website speaks for itself. Everyone in the team was super professional and helpful, guiding us through the process. We are very grateful to have a space which we love for many years to come."

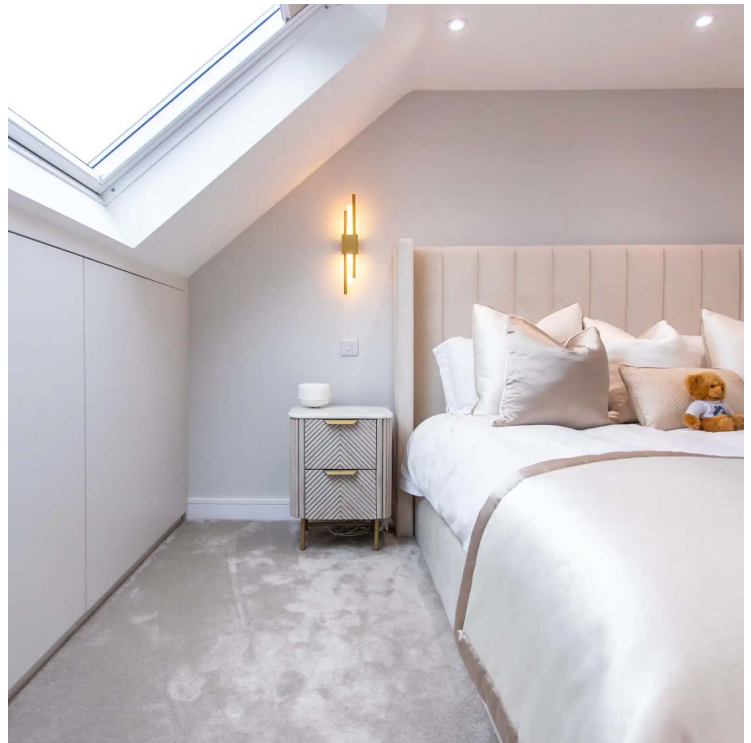
Dormer Conversion, Wootton



Scan to view case study

Project Overview:

- ✓ Truss-filled loft with 2.8m height
- ✓ Spacious master bedroom with air conditioning and reading lights
- ✓ Home office with VELUX® window
- ✓ Dressing room with fitted wardrobes and smart storage
- ✓ Ensuite with his-and-hers sinks, freestanding bath, walk-in shower, and LED lighting
- ✓ Hardie plank exterior matching housing estate design
- ✓ Integrated staircase with large SK06 VELUX® window for natural light





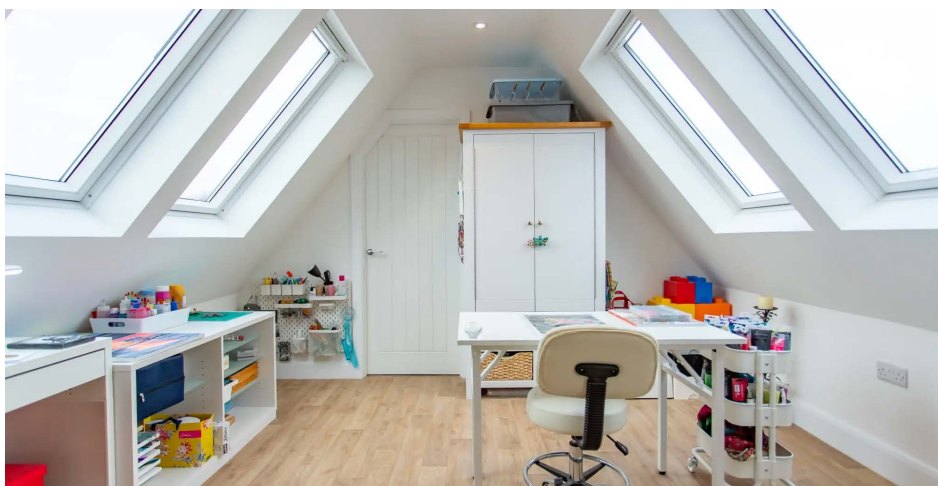


Project Overview:

- ✓ 4 new rooms (playroom, artist studio, adult snug and shower bathroom)
- ✓ Involved the removal of trusses, replaced with valley support beams
- ✓ New stairwell and expansive landing with MK06 VELUX® window
- ✓ Playroom with three PK08 VELUX® windows
- ✓ Artist studio with two combo VELUX® windows and storage room
- ✓ Adult snug with the apex of glass and balcony doors, designed for relaxation
- ✓ Basic shower bathroom for increased functionality and property value



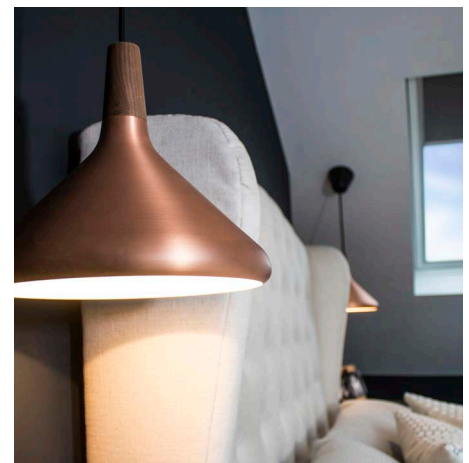
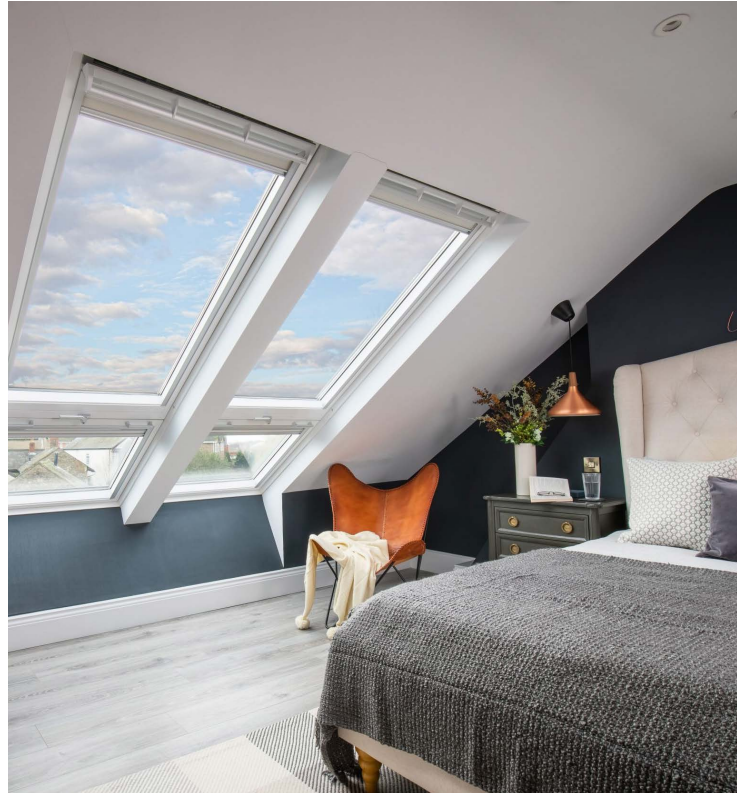
"We did a lot of research before deciding to go with DJ Moore Lofts, and we were very happy with our choice. Our loft conversion was very large VELUX® loft conversion with a complex apex window installation. The conversion included an additional 4 rooms, a bathroom and a hallway. The whole process ran very smoothly, and the conversion was completed within the specified time frame (7 weeks). The core team (Darren and Greg) that were on site from the start were lovely, helpful, and very patient with our questions. The second team that came to help install the VELUX® windows and change all the doors were also a great team to have on site. Communication was great, and everyone involved (including all the additional tradespeople) was professional and reliable. The work areas and general property areas were kept clean and tidy at the end of the day, and the intrusion into the house (when the stairs were installed) was kept to a minimum. I would definitely recommend Dan and his company, the conversion has had a really positive impact on our home."





Project Overview:

- ✓ Large bedroom with wardrobe area, ensuite, and storage
- ✓ Double VELUX® cabrio windows on the rear and a MK06 VELUX® window in the front
- ✓ Bed positioned against a feature chimney breast to enhance the loft's original character
- ✓ Spacious ensuite with large shower tray (0.9m x 1.4m), freestanding bath, wall-mounted basin, and LED feature lighting
- ✓ Repositioned wall and doorway for new stairs to match the house's original style, including mirrored newels and spindles
- ✓ VELUX® Light tunnel and modern light installed to brighten the hallway



"We chose DJ Moore Lofts due to a combination of things. This included the specifications for doing the lofts, which they had outstanding knowledge about, and their incredible imagination of creating our new loft from the empty space we had available. The turnaround of our loft conversion was amazing, ending in us being over the moon with the execution. We can't see anything that could have been done any better, resulting in us recommending DJ Moore Lofts without a doubt!"



Hip to Gable Loft Conversion, Bedford



Scan to view case study

Project Overview:

- ✓ Main bedroom with ensuite
- ✓ Extra space created by the new gable end wall and roof
- ✓ Three MK04 VELUX® windows: two in the bedroom, one over the new stairs
- ✓ Small box bedroom/office created by reducing 200mm from the front
- ✓ Bright and airy ensuite with stunning tiles and spacious shower
- ✓ Air conditioning unit installed by Ball Air Conditioning for year-round comfort





"DJ Moore has been extremely professional and effective from start to finish. Despite the pandemic, our loft conversion project was progressed quickly and efficiently with minimal disruption. Nathan and Jamie completed the structural work incredibly quickly and were an absolute pleasure to deal with, as were all of the other tradesmen. They all take a lot of pride in their work, and it shows in the finished product. Every element of the project was well-managed, and nothing was too much trouble. The overall finish is excellent, and we're delighted with the results. We have no hesitation in recommending DJ Moore and wish Daniel and his colleagues all the best."

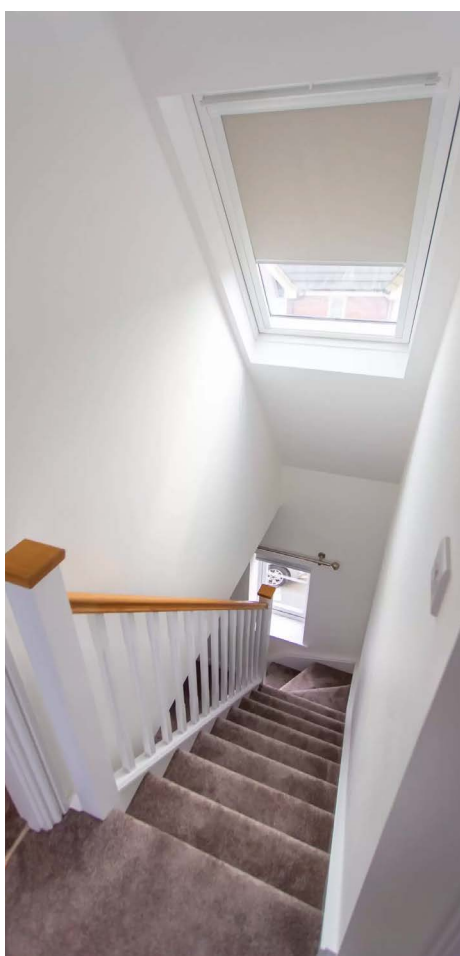
Dormer Conversion, Marston Moretaine



Scan to view case study

Project Overview:

- ✓ Two bedrooms and a bathroom
- ✓ Double-pitched dormers at the front, colour-matched to blend with the existing home
- ✓ Multiple VELUX® windows to ensure natural light and spacious feel
- ✓ Dressing area created using lower rear apex, with bespoke fitted furniture for storage
- ✓ Four-piece bathroom suite, including shower and freestanding bath, under large SK06 VELUX® window





"Have just had our loft conversion completed by DJ Moore. Great service from start to finish from all of the team. They gave great advice and ideas from design through to installation and directed us to some great local tradespeople to help with the finishing touches. Would definitely recommend Dan and the team if you are thinking of having your loft done."



Project Overview:

- ✓ Master bedroom with ensuite on a Victorian semi-detached property
- ✓ Enhanced natural light via two large SK06 VELUX® windows and two additional VELUX® skylights
- ✓ Integrated home working space on landing
- ✓ Bedroom feature cladding and bespoke wardrobe installation
- ✓ Four-piece bathroom with freestanding bath and LED-lit detailing



"DJ Moore has just completed a Velux extension for us in Bedford, creating a new master bedroom, ensuite, and large landing area. From our first conversations with Dan, we knew we were in good hands. He was helpful and informative, running us through all of the options, and we were very clear on what was going to be included as part of the work that DJ Moore was going to do for us. We were kept well-informed in the run-up to work starting on our property.

The actual construction work ran quicker and much smoother than expected (particularly in our almost 100-year-old house!) and Darren and the team worked hard and carefully, with minimal disruption to us. We have to give a particular shout-out to the bathroom team, who completed the tiling, plumbing and bathroom installation really well, and this room is now a highlight of the house! Since the completion of the main works, they've returned a few times to finish off small jobs in the loft, and each time, they have noticed and fixed small issues that hadn't even occurred to us, which really shows their level of care about the work that they do.

We wouldn't hesitate to recommend DJ Moore to anyone considering a loft conversion; definitely a 5-star experience!"



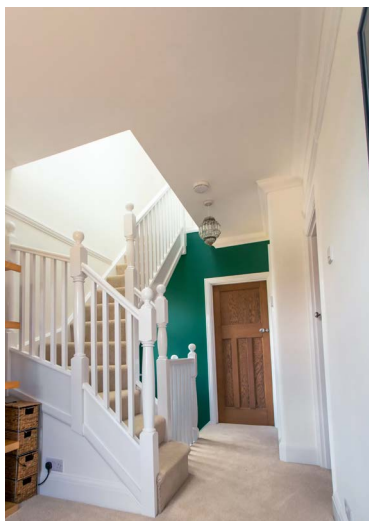
Dormer Conversion, Kempston



Scan to view case study

Project Overview:

- ✓ Master bedroom, ensuite and wardrobe storage
- ✓ Three MK04 VELUX® roof windows at the front and a Juliet balcony with a glass balustrade at the rear
- ✓ Rear dormer finished with Hardie plank cladding for a modern, clean look
- ✓ Large, spacious master bedroom, including bespoke wardrobes with MDF clad timber doors for a wood-inspired effect
- ✓ Ensuite with double shower, toilet, and handmade wooden vanity unit for a natural, organic feel
- ✓ Open-plan space created by removing the wall in the fourth bedroom, creating an open flow from the stairwell



"Very professional, very reliable, complete specialist. The team is fantastic; Dan runs his teams like a well-oiled machine; everything happens when they tell you. It was an amazing process, and it was amazingly unstressful and had no real impact on our life due to the fantastic way things are done by DJ Moore; we would highly recommend that the loft space they have created has completely changed our home and the finish is second to none. Outstanding."



Hip To Gable Conversion, Milton Keynes



Scan to view case study

Project Overview:

- ✓ New master bedroom, ensuite bathroom and guest office
- ✓ Moved bathroom to create space for loft stairs
- ✓ Added rear UPVC French doors with Juliet balcony for the master bedroom
- ✓ Installed 3 VELUX® windows at the front and 2 at the back for natural light
- ✓ Created a spacious ensuite with a full wet room and pocket door
- ✓ Replaced stair handrails and oak doors to match the new loft design
- ✓ Finished with Hardie plank cladding and reroofed for durability



"Fantastic service! I cannot recommend DJ Moore Lofts highly enough. They are so much more than just a loft conversion company. Our project consisted of a complete roof replacement with hip-to-gable conversion. This created the extra space needed for an amazing primary suite at the top of our house. In addition, we had a complete reconfiguration of the first-floor rooms, creating more usable space and a new heating system.

Dan and the team were super professional, accommodating (even with the changes we requested along the way), clean, tidy and just a great, friendly team of guys. Aftercare has been amazing, too. We are so happy with the work carried out and the end result; it has transformed our home."



Dormer Loft Conversion, Milton Keynes



Scan to view case study

Project Overview:

- ✓ Two large bedrooms, ensuite and bespoke dressing area with built-in wardrobes
- ✓ Added two dormers at the front, colour-matched cladding, and leaded glass to blend with the existing home style
- ✓ Installed six MK06 VELUX® windows and two UPVC dormer windows for natural light
- ✓ Created bespoke stairs with oak newels, oak string, and 10mm toughened glass for a modern feel
- ✓ Over-cladded existing stairs to match the new loft stairs without additional cost or disruption
- ✓ Installed a 300-litre unvented water tank to maintain high water pressure for the new ensuite bathroom



VELUX® Conversion, Silverstone



Scan to view case study

Project Overview:

- ✓ Master bedroom with a large ensuite bathroom
- ✓ Installed two VELUX® PK19 Cabrio windows for panoramic views of the countryside
- ✓ Added four large VELUX® windows for natural light and spacious feel
- ✓ Moved a wall in the front bedroom to allow for new stairs and extended the hallway
- ✓ Designed the loft with minimal furniture needs, using bespoke wardrobes for storage
- ✓ Fitted a spacious ensuite with a large shower, sink, toilet, and VELUX® SK06 window
- ✓ Turnaround time of just over five weeks due to a 3.6m head height and modern truss roof



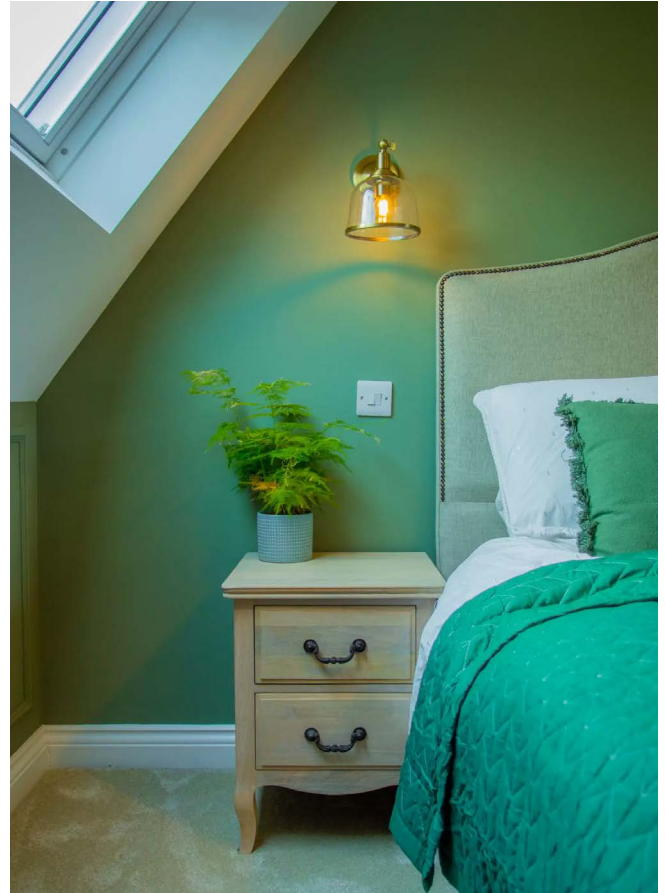
Dormer Conversion, Biggleswade



Scan to view case study

Project Overview:

- ✓ Master bedroom with ensuite bathroom and dressing area
- ✓ Added two small flat roof dormers with grey cladding to match the estate's architectural style
- ✓ Installed windows at the front and back of the bedroom for natural light and views
- ✓ Created a feature wall with the bed against the original end gable wall and added wall lights for a cosy atmosphere
- ✓ Designed a luxurious ensuite with freestanding bath, spacious shower, his and hers sinks, and a toilet, with VELUX® windows for natural light
- ✓ Built a bespoke dressing area with integrated LED lighting and custom wardrobes
- ✓ Reworked stairs to fit naturally over the existing structure with a small rear dormer, adding a window for extra light into the hallway



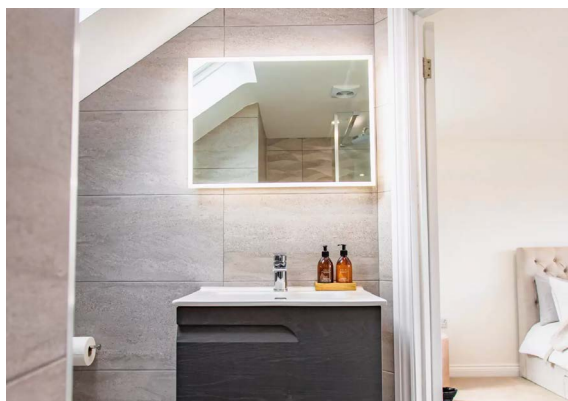
Dormer Conversion, Wooton



Scan to view case study

Project Overview:

- ✓ Master bedroom with ensuite and dressing area
- ✓ Stepped dormer design from the wall plate to create more functional space while improving exterior aesthetics
- ✓ Modern grey colour palette for a cohesive look, including matching windows, fascia and gutter
- ✓ Ensuite with luxury finishes, full tiling, LED mood lighting in the soap box and vanity unit
- ✓ Small VELUX® window installed at the apex for ventilation and natural light
- ✓ Fully fitted wardrobes in the dressing area
- ✓ Reworked stairs to fit over the existing set, with oak handrails and newel caps added along with LED lighting for added style and functionality



Hip To Gable Loft Conversion, Bedford



Scan to view case study

Project Overview:

- ✓ Master bedroom with ensuite
- ✓ Hip-to-gable conversion to create extra space, involving removal of the 'hip' section and adding a new gable end brick wall
- ✓ Rearranged front box bedroom wall to allow for stairs
- ✓ Custom-made fitted wardrobes at the foot of the bed, built by a second-fix carpenter, including space for a TV
- ✓ Ensuite built over the existing bathroom, facilitating pipework installation with minimal disruption
- ✓ Bright and airy design with VELUX® windows at the front and a Juliet balcony at the rear



Exclusive Trade Discounts

Enjoy up to 50% off both local businesses and national brands when you choose DJ Moore Lofts, helping you to add the finishing touches to your loft conversion at a fraction of the cost.

UP TO
50%
In Discounts



Local Trade Partners

Walls and Floors *Leading Tile Specialists*

t. 01536 314 730

a. Garrard Way, Telford Way Industrial Estate,
Kettering NN16 8TD



Bathroom Showroom

t. 01908 808 100

a. 3 Holdom Ave, Bletchley, Milton
Keynes, MK1 1QU



t. 07585 604609

a. Goldington Road, Bedford, MK42



t. 07368 638 571

a. 10 Thillans, Cranfield, Bedford MK43 0FZ

Brand Trade Partners

Topps Tiles

15% Discount

t. 0800 783 6262

w. www.toppstiles.co.uk

VELUX®

20% Discount

t. 01592 778 225

w. www.velux.co.uk



10% Discount

t. 0345 862 2878

w. www.victorianplumbing.com



EASY BATHROOMS
SIMPLY LUXURIOUS

50% Discount

t. 0330 660 1120

w. www.easybathrooms.com



Your Dream Home Starts Here

If you're ready to get started or simply have some questions regarding your project, please do not hesitate to contact us!



01234 984 076



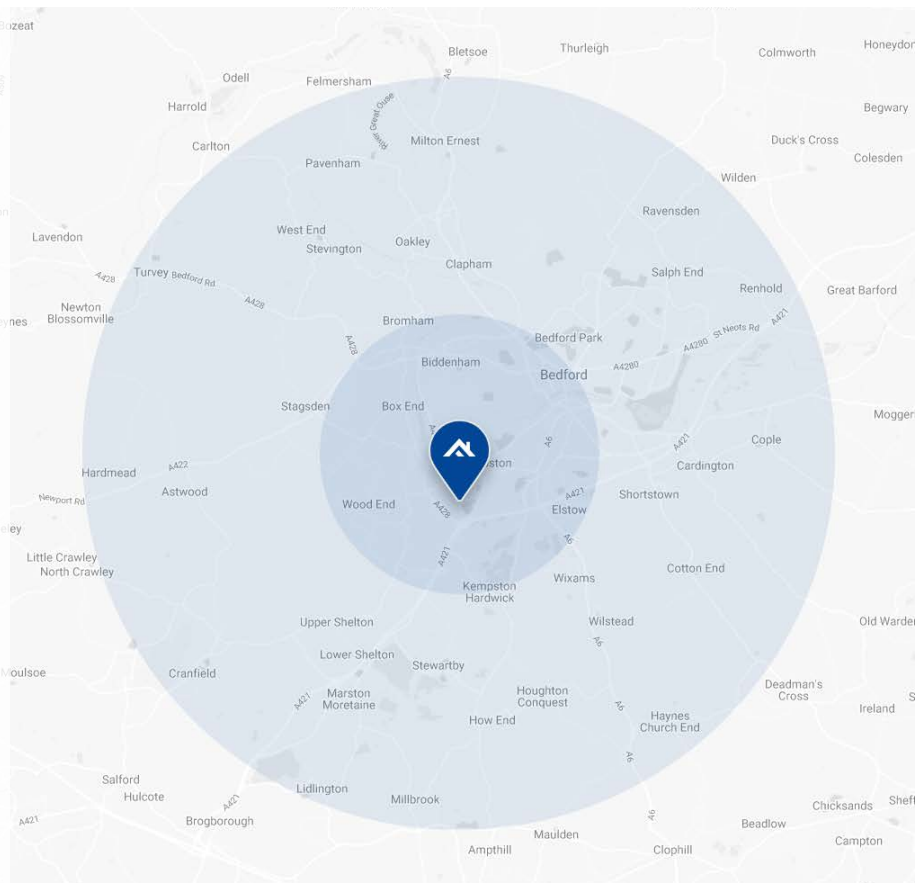
info@DJMooreLofts.co.uk



www.DJMooreLofts.co.uk

Areas We Cover

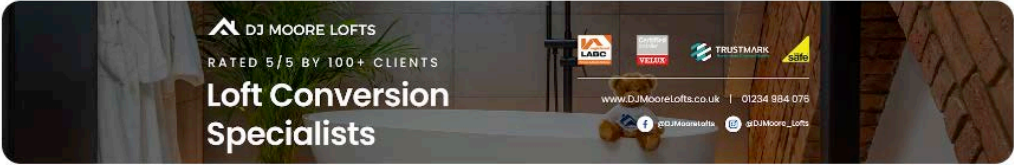
- ✓ Milton Keynes
- ✓ Aylesbury
- ✓ Woburn Sands
- ✓ Leighton Buzzard
- ✓ Towcester
- ✓ Bedford
- ✓ Berkhamsted
- ✓ And More...



Discover More On Our Socials



Watch our latest videos



DJMoore Loft Conversion Specialist

@djmooreloftconversionspeci458 · 8.96K subscribers · 397 videos
Welcome to the official DJ Moore Lofts YouTube Channel! Here, we share snippets of the work we have re...more
djmoorelofts.co.uk/download-brochure and 4 more links

Subscribe

Home Videos Shorts Live Playlists Posts

Latest Popular Oldest



Transforming a Victorian House with a Stylish Loft Conversion!



15 METRE LONG Finished Loft Conversion! DJ Moore Lofts!



HUGE VELUX Loft Conversion | DJ MOORE LOFTS!



Steam Room In Loft Conversion!!! DJ MOORE LOFTS!



1930/40's Loft Conversion Update!
1.9K views · 4 weeks ago



What Does A Finished Loft Conversion Look Like In 2025?



@DJMoorelofts



@DJMooreLofts



@DJMoore_Lofts





www.DJMooreLofts.co.uk

info@DJMooreLofts.co.uk

01234 910 836

